



**Alumni and Friends  
of the London School of Economics/USA**  
**NEWSLETTER**

Fall 2001

PO Box 7712; McLean, VA 22106 ♦ Tel: 202-296-2406 ♦ Fax: 703-465-2226 ♦ E-mail: [info@aflse.org](mailto:info@aflse.org)

## **Letter from Anthony Giddens, Director of the LSE, on the Recent Tragedies in the U.S.**

**W**e at the School extend our condolences and sympathies to all students, staff, alumni and other friends affected by the recent tragedies that have occurred in the United States ... we know that the School community will continue to be touched in many ways by these events and their aftermath.

Across the world people are searching to make sense of these events and to consider the best way forward. Our academics are playing an important part in this, providing informed analysis and comment. Indeed they are heavily inundated with requests from the media and policymakers.

At the School, we have been reflecting on our role and the contribution we can make. Ever since our foundation over a century ago, our commitment has been "to understand the causes of things" and to help make the world a better place.

We have long engaged many of the underlying issues currently being discussed. Our scholars have the expertise that is needed at this time – for example in international relations, conflict resolution, ethnicity and

nationalism, human rights, law, global finance and economics, third world development, globalization, governance and political institutions. Around the world, in diverse ways and in many walks of life, LSE alumni are actively applying their knowledge and experience in these and related subjects.

As an international public institution LSE has a duty to push forward with more research, more learning, more ways of ensuring we engage with the issues that led to such terrible acts, and in seeking to understand them to try and ensure they are never repeated. This means continuing our involvement with governments, business, the media and NGOs with renewed vigor.

I believe that together we can contribute significantly to understanding the underlying causes of these events, and to the process of responding to the complex and different world in which we now live.

## **LSE Web Page Hosts "Pages of Condolences"**

**T**he LSE's Office of Development and Alumni Relations has created an on-line "Pages of Condolences" where alumni from around the world can post and read messages of sympathy and support in response to the tragic 9-11 events. To view the pages, go to the LSE Web site at [www.lse.ac.uk](http://www.lse.ac.uk) and click on the "Alumni" icon. Scroll down to the bottom of the page where the heading "Tragedy in the United States of America" is listed and click on the "Pages of Condolences" link. You can also go to the AFLSE Web site at [www.aflse.org](http://www.aflse.org) and click on the "Pages of Condolences" link on the homepage.

## **LSE Shop Now On-Line**

Looking for holiday gift ideas? Log on to [www.lseshop.com](http://www.lseshop.com). Now you can buy a great selection of unique branded LSE products, such as T-shirts, sweatshirts, ties, scarves, accessories and memorabilia, in a wide range of colors and designs. The site accepts Visa and MasterCard and charges a £3.50 fee for overseas shipping and insurance.

### **Inside this issue...**

Chapter Updates- pgs. 2 - 3

AFLSE Scholarships Awarded- pg. 4

LSE Foundation Credit Card Still Available- pg. 5

# AFLSE CHAPTER REPORTS

*See mailing page for Chapter Leader contact numbers and e-mail address.*

## Welcome Leslie!

Leslie Griffin has recently taken over as Chapters Coordinator for AFLSE. Leslie works with chapter heads across the country, drawing on her own experience as Washington DC Chapter Co-Chair in the early 90s. She serves as Director of Asian Affairs at the U.S. Chamber of Commerce, and credits her LSE experience (M.Sc. in International Relations, 1990) with stimulating her interest in Asia. Leslie has an undergraduate degree in Economics from Wellesley College and spent a year at Trinity College, Oxford University.

## Boston

At the end of August, the Boston Chapter held its End of the Summer Fling at Kitty O'Shea's in Boston. Over 30 LSE alumni, friends and prospective students attended this event held in honor of recent leavers as well as those who headed over to the LSE this year, either as General Course students or for advanced degrees. So, to all of you newcomers to the Boston Chapter, welcome! And to those of you who are headed over to the LSE this year, bon voyage.

Also, as Liz Wall has stepped down in order to study law in Dublin, we are pleased to announce that since September the Boston Chapter is headed by Ian Crowley (B.Sc. Econ., 1988), Bart Edgerton (M.Sc. Political Theory, 1998) and Mary O'Harte (M.Sc. Social Policy and Diploma in Social Work (DIPSW), 1993-95). Many of you will recognize Ian, Bart, and Mary from Boston Chapter events. So please give them a warm welcome, as well as the same level of generous support that Liz enjoyed during her tenure. Ian, Bart, and Mary's contact details appear at the back of the newsletter, so please introduce yourselves if you don't know them already from your attendance at Boston area events.

The Boston Chapter will continue to hold monthly informal networking nights on the second Thursday of each month from 6:00-8:00 p.m. at Harvard Gardens, 320 Cambridge Street, Boston. Nearest T stop is Charles/MGH. Parking (garage) is available across the street at Mass. General Hospital. So, whether you are interested in networking informally or just socializing, we hope to see you there!

## New York

The New York Chapter continues to meet monthly as the "LSE 7 o'clock Club." Since the chapter is humming along nicely the focus of the monthly meetings has changed primarily to monthly networking get-togethers. Alums meet informally over cocktails (cash bar) at the Playwright Tavern in midtown Manhattan (202 West 49<sup>th</sup> Street, between Broadway and 7<sup>th</sup> Avenue) on the second floor. New members and recent grads are always welcome!

As for past events, the NY Chapter held their first ever New Student Bon Voyage Party night in midtown Manhattan this August and it was a great success. More than 60 alumni, new and current students mingled and shared their experiences of the LSE.

On July 17 the New York Chapter hosted its annual evening in Central Park with the New York Philharmonic. People brought food and beverages to share and the 40+ alumni and friends had a great time.

For upcoming events, the NY Chapter will host their Annual Holiday Party on Friday, December 7 at 7pm. The location will be The Old Stand at 914 Third Avenue at 55<sup>th</sup> Street downstairs in the Eamonn Coghlan Room. Cost is \$20 at the door, no RSVP required, hors d'oeuvres will be served, a cash bar and casual attire. We will also hold a raffle for LSE merchandise.

One again the NY Chapter will host their Annual Wine Tasting with Mark Stone! It will be in March, 2002 at the Playwright Tavern, more information to follow.

## Philadelphia

The Philadelphia chapter continues to meet socially on a monthly basis. Several new faces showed up during the summer for al fresco refreshments on the terrace at the Palladium restaurant. In July, the chapter co-hosted a meeting with the Philadelphia Council of Business Economists. The new president of the Federal Reserve Bank of Philadelphia, Dr. Anthony Santomero, presented remarks following lunch. In August, a send-off dinner was held at the New Deck Tavern for those who left for London in the fall. New faces and guests are welcome at all of our events. For more information, contact Rich Stein, chapter chair.

## Seattle

### *Past Events*

The Seattle Chapter was in attendance at the first home game of the Mariners on September 18 following the attacks in NY. It was a very special evening for all those who attended.

### *Upcoming*

Wine away the afternoon: Bordeaux produces some of the most famous wines in the world — wines that other regions have long sought to emulate. But it can also be confusing for American consumers: what's the difference between Pauillac and Pomerol? St-Estèphe and St-Émilion? Why is a vintage sometimes good in one part of Bordeaux and not in another? And how do the wines compare to those from California and Washington? Spend an afternoon with wine educator Bob Harrison as he takes us on a tasting tour of Bordeaux wines from the 1998 vintage — with the opportunity afterward to purchase a bottle or two of your favorites. The event will take place on Sunday, December 2, from 3:00 – 5:00 p.m. at Fine Wine and Cigars in the Redmond Town Center (16535 NE 76th St., Redmond). The cost for this event will be \$35/pp. Due to the size of the space we are using, the event needs be limited to 20 persons, so contact Ted ASAP if you are interested in attending.

*The next edition of this newsletter will be out in the beginning of next year. If you have any ideas for content, please feel free to contact Rob Keast, the newsletter editor, at [rkeast@welfareto.org](mailto:rkeast@welfareto.org) or (202) 955-3005 ext. 325.*



A woman of many travels, Jane Plakias, administrator of the AFLSE scholarship office, is pictured here on a recent trip to the North Pole. Where will her next journey take her? There are rumors that she is looking into space travel?!

## The Director Becomes “a Collectible”

“The sociologist Anthony Giddens is not happy to find himself represented as a collectible doll”

*The Daily Telegraph* (July 5, 2001)

It seems that the Director has been chosen as one of a group of sociologists among whom “Foucault looks like he’s conducting an orchestra.” The Director’s primary complaint, aside from knowing nothing about the project, is that the “Giddens theory action figure” appears to be in a complete state of shock, and is wearing a waistcoat (U.S. = vest), a garment he claims never to have worn in his life.

## AFLSE/LSE American Society Send Off New Students

The AFLSE and the LSE American Society, a LSE-based organization for American students, co-sponsored new student send-off gatherings in Boston, Chicago, New York, Philadelphia, and Washington, DC this summer. In each city, it was an opportunity for alums to network and for new students to get tips about the LSE and London.

## AFLSE Scholarship Committee Announces Awardees

The AFLSE Scholarship Committee is pleased to announce that three scholarships have been awarded for the 2001-2002 school year. This year's recipients, chosen from 144 applicants, represent the broad range of academic interests and personal histories found among LSE students.

**Marybeth Felicity Daly:** Felicity will be studying Gender and Development in the Gender department. She is a 2000 graduate of the City College of New York, where she received her bachelor of arts in International Studies. At LSE, Felicity plans to continue studies she began as an undergraduate on the effect of economic development strategies on women in developing nations. Felicity's research for her senior thesis included interviews with female micro-entrepreneurs she met during an internship with the Trickle Up program in Bihar, India. She hopes to work for a development organization after completing her M.Sc.

**Ha Hoang:** Ha will be studying Comparative Politics in the Government department and has been designated by the AFLSE Scholarship Committee as the Robbins Scholar. She graduated from Trinity College in Washington, DC, in 2000 with a bachelor of arts in Political Science and English. In her personal statement, Ha explained how reading *King Leopold's Soliloquy*, by Mark Twain, in an English class sparked her interest in politics. As a college student in Washington, Ha's interest in government and politics led her to volunteer on several political campaigns and to do an internship at the Supreme Court. Ha is considering pursuing a Ph.D. after she completes her M.Sc.

**Martina Strazanova:** Martina will be studying International Relations at LSE. She received her bachelor of arts in Peace and Conflict Studies from the University of California-Berkeley in 2000. Her interest in

this field dates back to her teenage years in her native Slovak Republic. As an undergraduate, both Martina's honors thesis and her work at the Center for Strategic and International Studies in Washington, DC, focused on conflict resolution, particularly in the Slovak-Hungarian conflict. She plans to continue her studies in conflict resolution at LSE, with the goal of working in the field after graduation. Martina's award was designated as the Elizabeth Smith Brownstein Scholarship, in honor of the distinguished past president of the AFLSE who was instrumental in setting up the scholarship program.

All of this year's scholarship recipients expressed their most sincere gratitude to the AFLSE for their scholarships. We look forward to reporting on their studies and experiences in London later this year.

## Departures

While the complete tally of who was lost at the World Trade Center and Pentagon and their backgrounds is still unknown, at least two men with ties to the LSE lost their lives on September 11:

**David Berry,** a 43 year old financial analyst and executive vice president and director of research at Keefe, Bruyette & Woods, a banking and financial services brokerage firm, was working on the 89<sup>th</sup> floor of the south tower when the second plane crashed into it. Berry was widely quoted in the media for his assessment of current economic conditions. He graduated from Yale with honors in philosophy and physics and studied at the LSE for a brief time.

**David Rice,** a 31 year old investor in bonds at Sandler O'Neill & Partners was also working in the south tower on September 11. After coping with alcoholism and drug abuse in his 20s, Rice turned his life around: he became of Fulbright scholar in Zimbabwe and South Africa, and then earned his masters at the LSE.

## Attention AFLSE members!

M.E.Sharpe, INC. is pleased to offer AFLSE members an exclusive discount on selected journals

Now, as part of the benefits of AFLSE membership, you can enjoy special savings on some of today's most respected economic, political, and information technology journals. Contact the AFLSE for additional information and order form.

### CHALLENGE

*The Magazine of Economic Affairs*

Editor: Jeff Madrick

Annual subscription price: \$47.00

Member price: \$40.00

New!

### INDICATORS

*The Journal of Social Health*

Editor: Jeff Madrick

Annual subscription price: \$50.00

Member price: \$45.00

### WORKINGUSA

*The Journal of Labor and Society*

Editor: Immanuel Ness

Annual subscription price: \$35.00

Member price: \$30.00

### INTERNATIONAL JOURNAL OF ELECTRONIC COMMERCE

Editor-in Chief: Vladimir Zwass

Annual subscription price: \$69.00

Member price: \$60.00

### JOURNAL OF MANAGEMENT INFORMATION SYSTEMS

Editor-in-Chief: Vladimir Zwass

Annual subscription price: \$79.00

Member price: \$70.00

### JOURNAL OF POST KEYNESIAN ECONOMICS

Editor: Paul Davidson

Annual subscription price: \$79.00

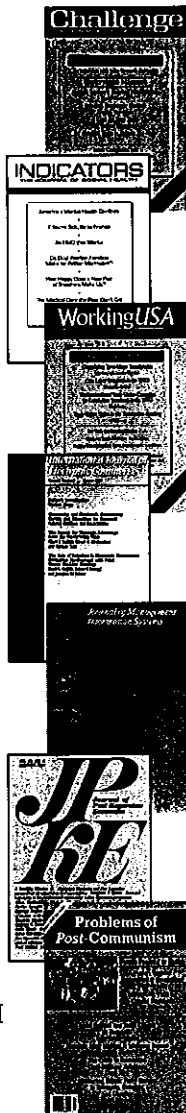
Member price: \$70.00

### PROBLEMS OF POST-COMMUNISM

Editor: James R. Millar

Annual subscription price: \$47.00

Member price: \$40.00



This special offer applies to individuals only. Subscription prices include shipping within the U.S. Foreign postage rates available upon request.

*M.E.Sharpe* PUBLISHER

AD103L

## LSE CREDIT CARD AVAILABLE IN USA

The LSE Foundation MBNA No-Annual-Fee and low interest rate Platinum Plus MasterCard credit card is now available to AFLSE members. You can make an application via telephone, a secure online application or by mail application.

This card helps generate vital funding in support of the LSE Foundation and the AFLSE since MBNA makes a contribution for every new account that is opened and when each account is renewed. And they make an additional contribution every time the card is used to make a purchase.

Some of you will have already received a solicitation form from MBNA to apply for an LSE Foundation credit card. Please consider completing the form you have received. If you do not have a mailed solicitation you may apply for the LSE credit card in the following ways:

- Telephone 888-227-3717 and be sure to mention the LSE Foundation Card;
- Through the Internet by clicking on <http://www.webapply.com/aflse-yewk>;
- By writing to: Platinum Plus Acceptance Center, P.O. Box 981052, El Paso TX 79998-9935.

For further information please contact  
Leon Desbrow at Leon  
[leon@desbrow.net](mailto:leon@desbrow.net)

**AFLSE OFFICERS:** *President:* Ann Imlah Schneider; *Secretary:* Thomas E. Kern; *Treasurer:* Michael Morris; *Chapters:* Leslie C. Griffin; *Newsletter Editor:* Robert Keast, Fax (202) 955-1087; e-mail: Rkeast@welfareto.org; *Advertising Manager:* Sean Culhane, Fax (703) 465-2226

**CHAPTER LEADERS:**

**Arizona:** Arvind Singh, P.O. Box 65990, Tucson, AZ 85728; (H) (520) 529-8874; (E) arvindsingh@earthlink.net

**Atlanta:** Wayne Gantt, 144 West Lake Court, Athens, GA 30606-4655; (H) (706) 208-8889; (E) ganttw@bellsouth.net

**Boston:** Ian Crowley, 33 Hunting Street, Cambridge, MA 02141; (H) (617) 497-7250; (E) icrowley1@yahoo.com

**Boston:** Barton Edgerton, 915A Beacon Street, Boston, MA 02115; (H) (617) 266-4374; (E) btedgerton@altavista.com

**Boston:** Mary O'Harte, 29 Governor Winthrop Road, Somerville, MA 02145-1005; (O) (617) 573-2528; (E) mloharte@aol.com

**Buffalo:** VACANT

**Chicago:** Blair Nelson-Sanford, 422 Engel Boulevard, Park Ridge, IL 60068-4457; (O) (312) 362-8847; (F) (312) 362-8828; (E) bsanford@wppost.depaul.edu

**Davis/Sacramento:** Sander Rubin, 2032 Gauguin Place, Davis, CA 95616-0542; (H) (530) 753-7263; (E) sander@acm.org

**Denver:** Richard Banta, 303 E. 17th Avenue, Suite 700, Denver, CO 80203; (O) (303) 860-8048; (F) (303) 831-1983; (E) rbantaatty@earthlink.net

**Downstate Illinois:** Walter McMahon, 606 Lenox Court, Champaign, IL 61822-7800; (O) (217) 333-2417; (F) (217) 244-6678; (E) wmcMahon@uiuc.edu

**Central Florida:** VACANT

**North Florida:** David Woodward, 111 Bayshore Drive, Warrington, Pensacola, FL 32507-3583; (O) (850) 455-2645; (H) (850) 456-0360 (E) texasnole@beachjunkie.com

**South Florida:** VACANT

**Indiana:** Swadesh Kalsi, 4315 Washington Street, Columbus, IN 47203-1140; (O) (317) 636-4341; (F) (317) 636-1507; (E) SSK@KDLegal.com

**Los Angeles:** Andrew Kane, 19262 Northfleet Way, Tarzana, CA 91356-5807; (O) (213) 614-6436; (F) (213) 553-3618; (E) andrew.kane@us.arthurandersen.com

**Maine:** David Rudnick, 147 Fairwind Lane, Cumberland Foreside, ME 04110; (O) (207) 846-1068; (F) (207) 846-8940; (E) dynamic@maine.rr.com

**Michigan:** VACANT

**Minneapolis:** E. J. Nixon, 111 First Street, No. 523, Minneapolis, MN 55415; (O) (612) 343-7000; (F) (612) 343-7001; (E) bnixon@rahngroup.com

**New Orleans:** VACANT

**New York:** Donal Casey, 25 Knoll View, Ossining, NY 10562-5944; (O) (212) 872-6052; (E) donalcasey@kpmg.com

**New York:** John Casey, 250 W. 89th Street, No. 11B, New York, NY 10024-1751; (O) (212) 250-9023; (H) (212) 721-7595; (E) john.casey@db.com

**Ohio:** Breck Platner, 2 Bratenahl Place, No. 14A, Cleveland, OH 44108; (O) (440) 914-2227; (F) (440) 914-2250; (E) breck.platner@netrexconnects.com

**Philadelphia:** Richard Stein, 41 Edgewater Avenue, Westville, NJ 08093-1133; (H) (856) 742-8147; (F) (856) 742-8147; (E) richard\_stein@lsealumni.com

**San Diego:** VACANT

**San Francisco:** Patrick Hitchcock, 1117 Killarney Lane, Burlingame, CA 94010; (O) (415) 291-1274; (F) (415) 291-8657; (E) phitchc3@firstunion1.com

**Seattle:** Theodore Hoffman, 26217 SE 162nd Place, Issaquah, WA 98027-8237; (O) (425) 936-1747; (F) (425) 936-7329; (E) tedho@microsoft.com

**North Texas:** Patrick Mulligan, 2651 N. Harwood, Suite 250, Dallas, TX 75201; (O) (214) 969-0590; (F) (214) 969-1850; (E) patrickmulligan@mindspring.com

**South Texas:** Aaron Gill, 9102 Ashridge Park, Spring, TX 77379; (O) (281) 580-4499; (F) (281) 580-0086; (E) agill@votextrading.com

**Washington, DC:** Golam Arshad, 14819 Strawberry Lane, Burtonsville, MD 20866; (O) (301) 613-4202; (E) arshadng@aol.com

**Washington, DC:** Clara Montanez-Haney, 5318 Yorktown Road, Bethesda, MD 20816; (O) (202) 336-5098; (F) (202) 312-7049; (E) clara.montanez@UBSpainewebber.com

**AFLSE ADDRESSES**

For membership information or to submit change of address information, please contact: AFLSE National Office, P.O. Box 7712, McLean, VA 22106; Tel: (202) 296-2406 (for upcoming events, press 4); Fax: (703) 465-2226; e-mail: info@afse.org

For information about studying at LSE and AFLSE scholarship information, please contact: Jane P. Plakias, 733 15<sup>th</sup> Street, NW, Suite 700, Washington, DC 20005; Tel. (202) 347-3232

6\*8\*\*\*\*\*3-DIGIT 2001  
 THOMAS E. KERN  
 2001  
 13421 COACHLAMP LANE  
 SILVER SPRING MD 20906

RETURN SERVICE REQUESTED

NON PROFIT ORG  
 U.S. POSTAGE  
 PAID  
 McLEAN VA  
 PERMIT NO. 446

Alumni and Friends of the  
 London School of Economics  
 P.O. Box 7712  
 McLean, Virginia 22106

